

ASCO 185 SERIES AUTOMATIC & MANUALLY OPERATED POWER TRANSFER SWITCHES RATED 100, 200, & 230 AMPERES, 240 VAC, SINGLE PHASE/3 WIRE

D

C

B

A

D

C

B

A

NOTES:

1) Automatic & Manually Operated Power Transfer Switch: ASCO D185, 2 pole, 100, 200, & 230 amperes, 240 vac. Listed to UL 1008, Standard for Transfer Switching Equipment. For use on Optional Standby Systems as defined by NFPA 70 (National Electrical Code (NEC), Article 702.

Transfer Controller (Automatic Type Only) - Group 4 Automatic Transfer Switch Controller including: (Refer to 185 Series Operator's Manual, PN 381333-319, supplied with the transfer switch for detailed information)

User Controls & Status Indication

- Load on Preferred Source (Utility) LED indicator - green
- Load on Alternate Source (Generator) LED indicator - red
- Preferred Source (Utility) Acceptable LED indicator - green
- Alternate Source (Generator) Acceptable LED indicator - red
- Automatic Engine-Generator Exerciser (Setting & Engine Running) LED indicator
- Transfer Test membrane pushbutton
- Bypass Time Delay (active time delay or engine-generator exercise period) membrane pushbutton
- Set Engine Exerciser membrane pushbutton

Time Delays

- Override Momentary Preferred Source (Utility) Outages - Factory set at 3 seconds
- Transfer to Alternate Source (Generator) - Factory set at 10 seconds
- Override Momentary Alternate Source (Generator) Outages - Factory set at 4 seconds
- Retransfer to Preferred Source (Utility) - 5 minutes/fix
- Engine-Generator Unloaded Running (Cooldown) Period - Factory set at 5 minutes

Control Signals

Engine-Generator Automatic Starting Controls - (1) form C contact

Remote Controls (Using Customer Supplied Contacts)

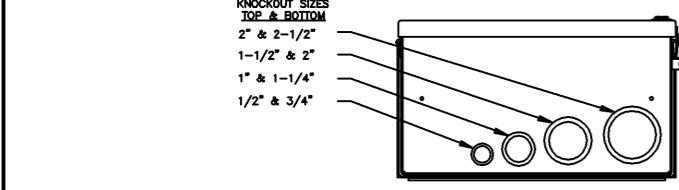
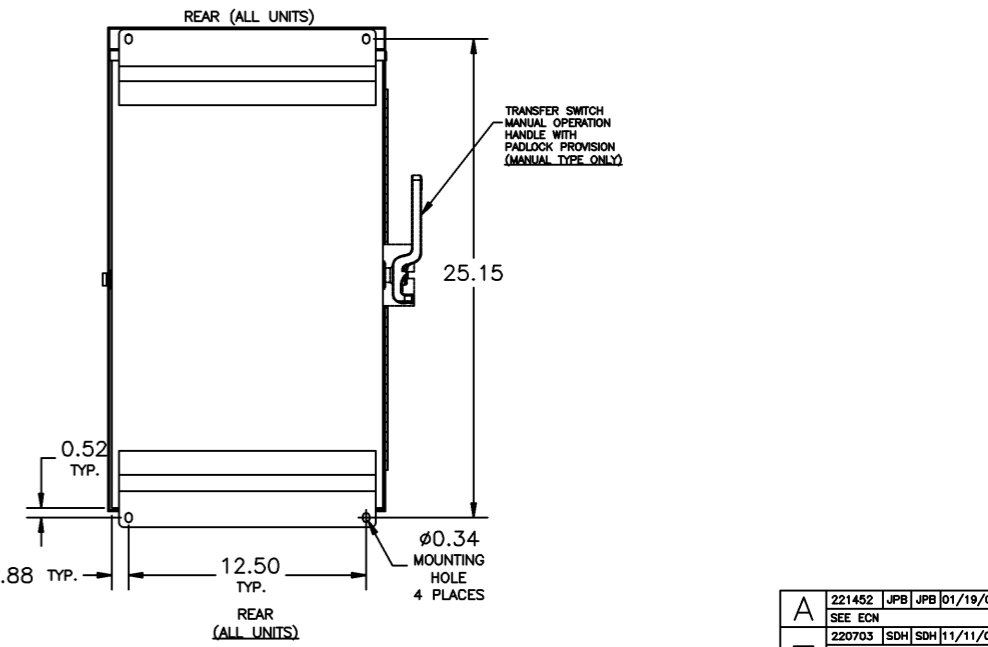
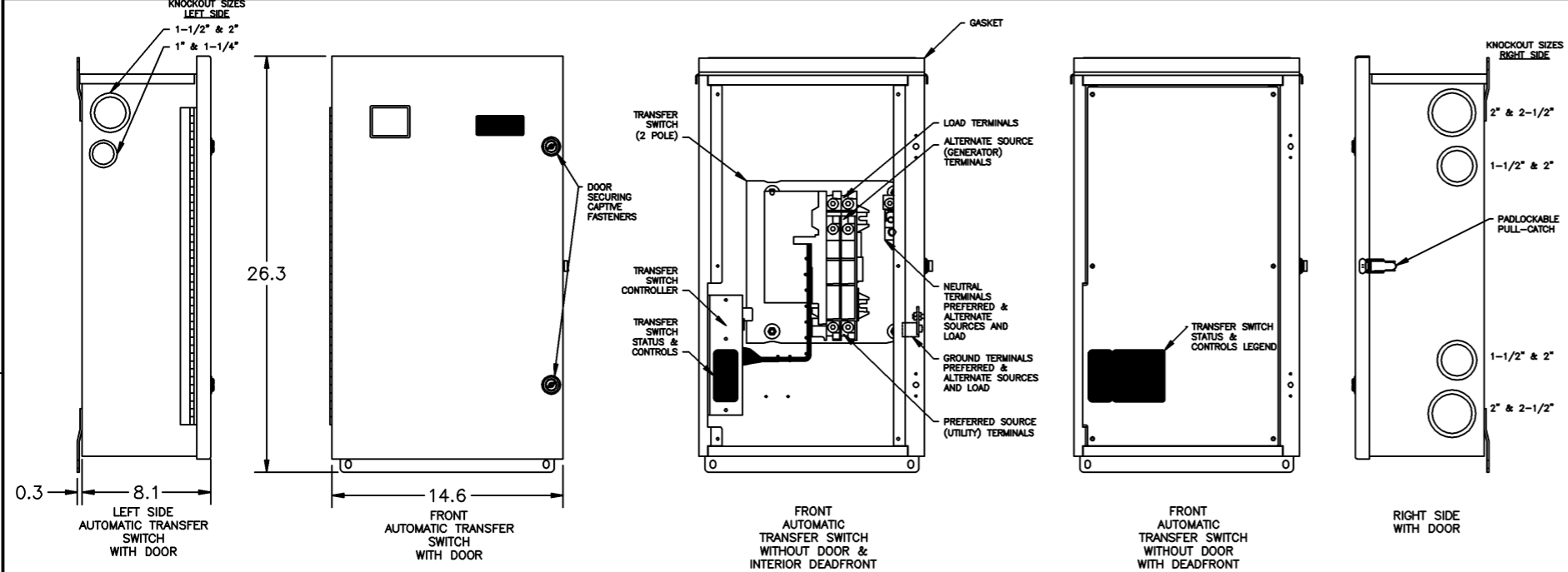
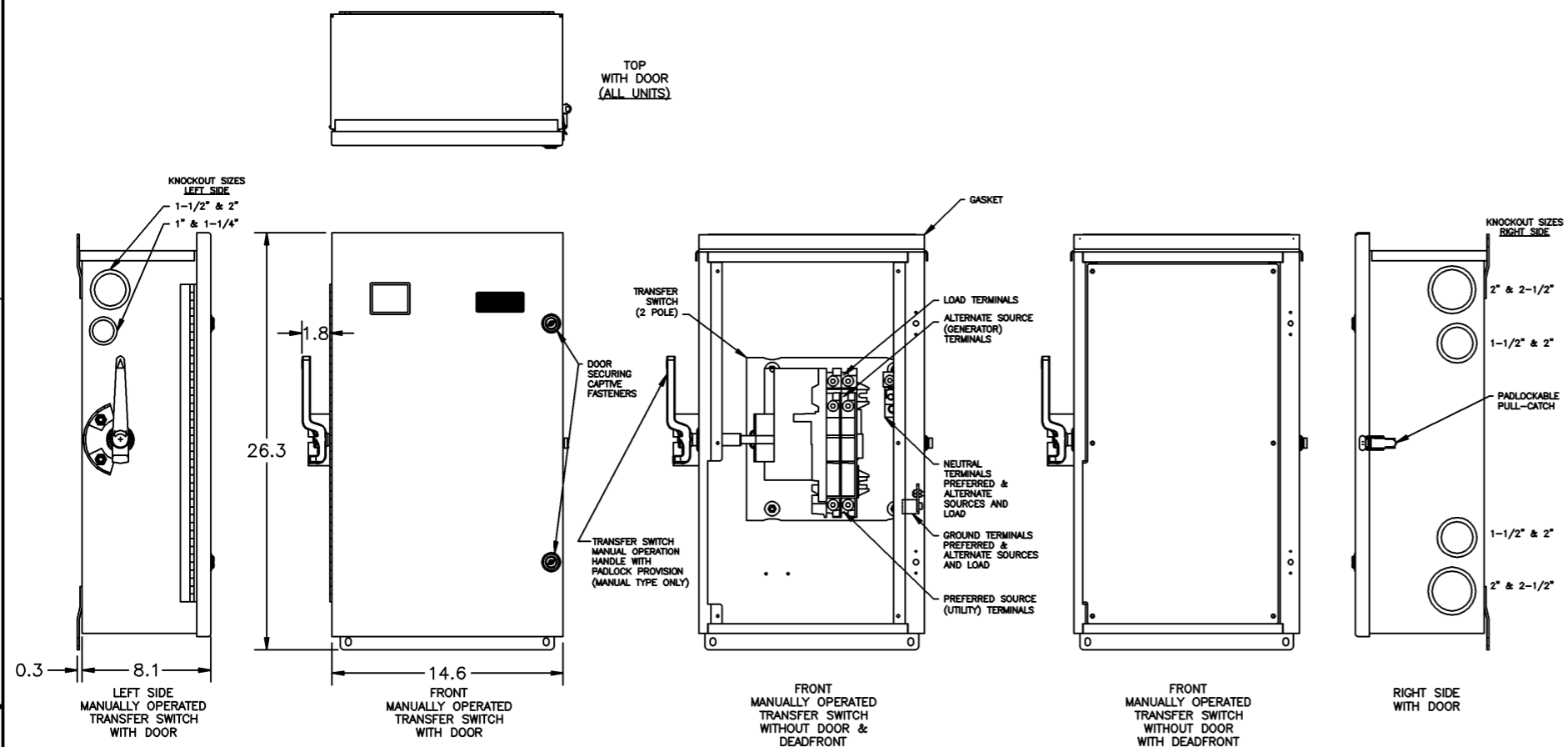
- Remote Test Feature
- Remote Test with Automatic Retransfer to Preferred Source (Utility) Feature
- Bypass Time Delay on Retransfer to Preferred Source (Utility) Feature

External Manual Transfer Operator (Manual Type Only) - Quick Make/Quick Break Operator for manual load transfer. Includes padlocking provision of operating handle.

2) Enclosure: Listed to UL 50 Standard for Enclosures for Electrical Equipment. Type 3R Outdoor. 12 gauge aluminum alloy. Finish - RAL 7035 Light Gray Polyester Powder Coating.

3) Neutral & Equipment Ground Terminations - Provided for Preferred (Utility) & Alternate (Generator) Sources and Load

4) Conductor Sizes - 100 amps: (1) #14 AWG to 4/0 AWG Al or Cu. 200 & 230 amps: (1) #14 AWG to 4/0 AWG Cu ONLY.



PROJECT NAME:		221452 JPB JPB 01/19/09	
OUTLINE & MOUNTING		185 SERIES, TYPE 3R ENCLOSURE	
185 SERIES (100, 200, & 230 AMPERES)			
AUTOMATIC & MANUALLY OPERATED POWER TRANSFER SWITCHES			
BY	DATE	MANUFACTURING TOLERANCES TO BE IN ACCORDANCE WITH ASCO PROCEDURE MP-1-003. FOR PLASTIC PARTS SEE MP-1-005	ASSEM. REF. NO.
SDH	11/08		
CHECKED		PROPERTY OF ASCO POWER TECHNOLOGIES. USE PERMITTED FOR OUR WORK ONLY. ALL RIGHTS OF DESIGN OR INVENTION ARE RESERVED.	SCALE 4:76 SIZE DS
APPROVAL			844557-001
FINAL APPROVAL	SDH 11/08	ASCO POWER TECHNOLOGIES, LP.	DRAWING NO. 221452 SHEET 10F1
		FLORHAM PARK, NEW JERSEY 07832 U.S.A.	