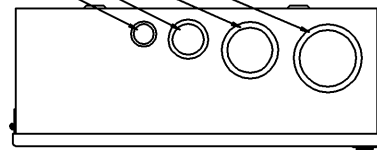


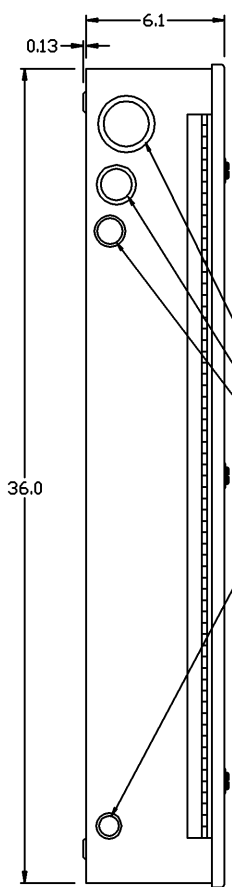
ASCO 185 SERIES SERVICE EQUIPMENT POWER TRANSFER SWITCH RATED 200 AMPS, 240V SINGLE PHASE, 3 WIRE

KNOCKOUTS SIZES
TOP & BOTTOM
2" & 2-1/2"
1-1/2" & 2"
1" & 1-1/4"
1/2" & 3/4"



TOP WITH DOOR

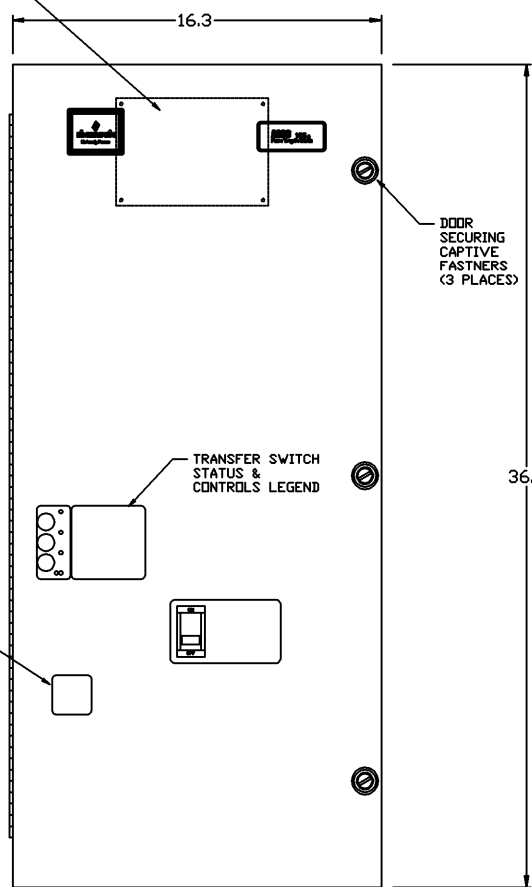
OPTIONAL ACC. 118G
AUTOMATIC ENGINE-GENERATOR EXERCISER
WITH POWER SOURCE AVAILABILITY SIGNAL
CONTACTS
(MOUNTED ON REAR OF DOOR)



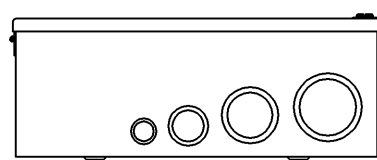
LEFT SIDE
AUTOMATIC TRANSFER
SWITCH
WITH DOOR

KNOCKOUTS SIZES
LEFT SIDE
1-1/2" & 2"
1" & 1-1/4"
3/4" & 1"
1/2" & 3/4"

PLATE REMOVED
WHEN OPTIONAL
SURGE ARRESTOR
SUPPLIED



FRONT
AUTOMATIC TRANSFER
SWITCH
WITH DOOR



BOTTOM
WITH DOOR

NOTES:

- Service Equipment Automatic Power Transfer Switch:
ASCO D01AUS, 2 pole, 200 amperes, 240 vac. Listed to UL 1008, Standard for Transfer Switching Equipment. For use on Optional Standby Systems as defined by NFPA 70 (National Electrical Code (NEC), Article 702).

* Suitable for use as service equipment—Normal Source Only. An additional disconnect must be readily accessible for the alternate source, unless the alternate source is an accessible generator and can be readily shutdown.

Automatic Power Transfer Switch: ASCO D185, 2 pole, 200 amp, 240 vac. UL Listed to UL 1008 Standard for Transfer Switching Equipment.

Transfer Controller - ASCO Group 4 Automatic Transfer Switch Controller including: (Refer to 185 Series Operator's Manual, PN 381333-319, supplied with the transfer switch for detailed information)

User Controls & Status Indication
Load on Preferred Source (Utility) LED indicator - green
Load on Alternate Source (Generator) LED indicator - red
Preferred Source (Utility) Acceptable LED indicator - green
Alternate Source (Generator) Acceptable LED indicator - red
Automatic Engine-Generator Exerciser (Setting & Engine Running) LED indicator
Transfer Test membrane pushbutton
Bypass Time Delay (active time delay or engine-generator exercise period) membrane pushbutton
Set Engine Exerciser membrane pushbutton

Time Delays

- Override Momentary Preferred Source (Utility) Outages - Factory set at 3 seconds
- Transfer to Alternate Source (Generator) - Factory set at 10 seconds
- Override Momentary Alternate Source (Generator) Outages - Factory set at 4 seconds
- Retransfer to Preferred Source (Utility) - 5 minutes/fix
- Engine-Generator Unloaded Running (Cooldown) Period - Factory set at 5 minutes

Control Signals

Engine-Generator Automatic Starting Controls - (1) form C contact

Remote Controls (Using Customer Supplied Contacts)

- Remote Test Feature
- Remote Test with Automatic Retransfer to Preferred Source (Utility) Feature
- Bypass Time Delay on Retransfer to Preferred Source (Utility) Feature

2) Enclosure: Listed to UL 50 Standard for Enclosures for Electrical Equipment. Type 1 Indoor. Constructed of 14 gauge steel. Finish - RAL 7035 Light Gray Polyester Powder Coating.

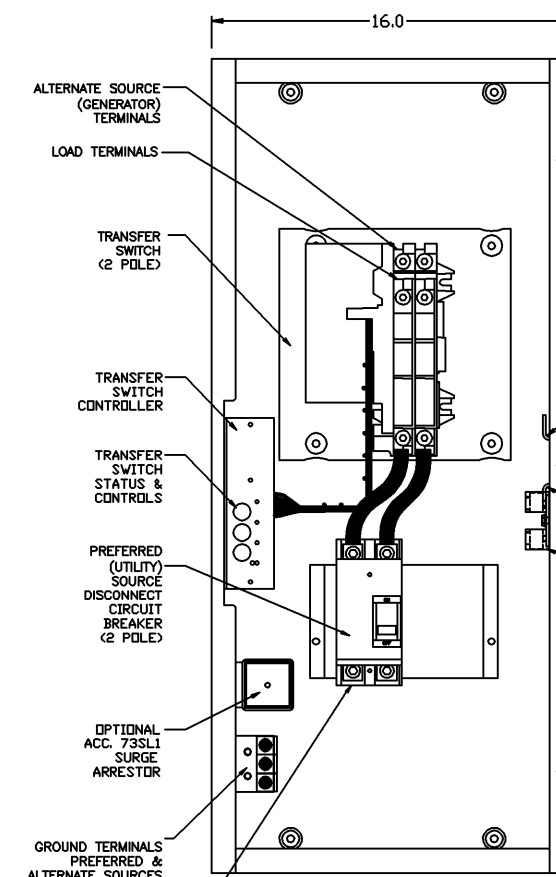
3) Neutral & Equipment Ground Terminations - Provide for Preferred (Utility) & Alternate (Generator) Sources and Load.

4) Conductor Sizes - 200 amps: (1) #14 AWG to 4/0 AWG Cu ONLY, Alternate (Generator) Source and Load
(1) #4 AWG to 300 MCM, Preferred (Utility) Source

5) Main Bonding Jumper factory installed in the Disconnected position.

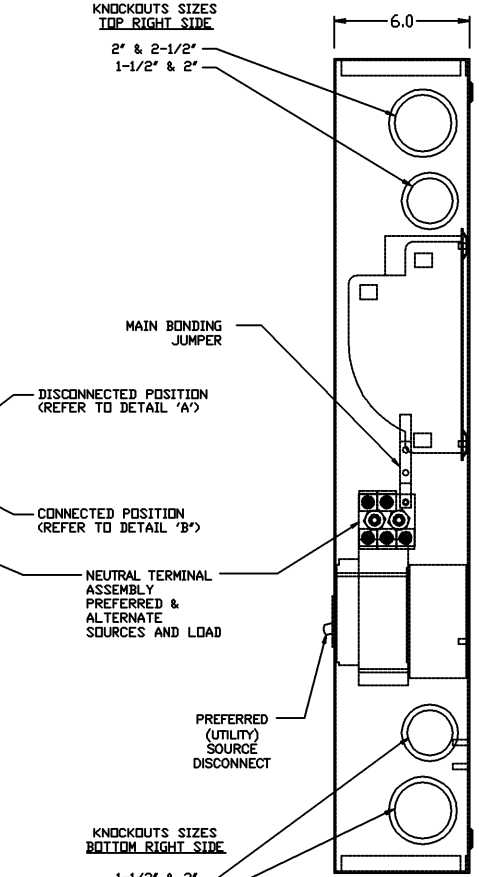
6) When used for Service Entrance the Main Bonding Jumper is to be removed from the Disconnected position and re-installed in the Connected position, with the existing hardware and one (1) additional 1/4-20 thread forming screw, which connects the Main Bonding Jumper to the Neutral Terminal Assembly.

7) Short Circuit Rating:
(Main): 10kA at 240 vac (Preferred (Utility) Source Disconnect Circuit Breaker), Square-D Cat. No. QBL22200, 2 pole, 200 amp.

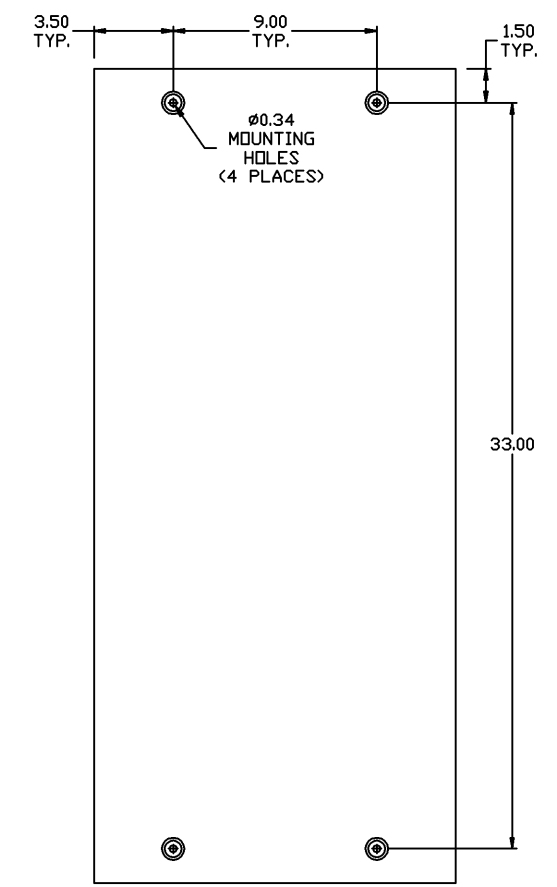


FRONT
AUTOMATIC TRANSFER
SWITCH
WITHOUT DOOR

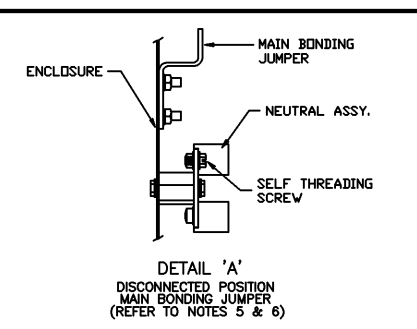
KNOCKOUTS SIZES
TOP RIGHT SIDE
2" & 2-1/2"
1-1/2" & 2"



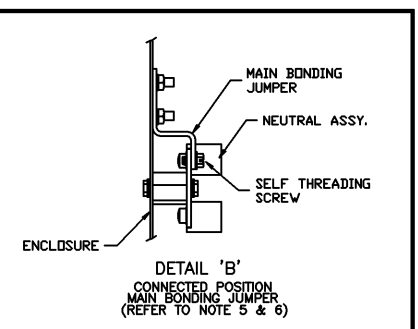
RIGHT SIDE
AUTOMATIC TRANSFER
SWITCH
WITHOUT DOOR



REAR
AUTOMATIC TRANSFER
SWITCH



DETAIL 'A'
DISCONNECTED POSITION
MAIN BONDING JUMPER
(REFER TO NOTES 5 & 6)



DETAIL 'B'
CONNECTED POSITION
MAIN BONDING JUMPER
(REFER TO NOTE 5 & 6)

PROJECT NAME:		REV. TO		EDN NO.	BY	APP.	DATE
OUTLINE & INSTALLATION		C		221452	JPB	JPB	01/16/09
SERIES 185, 200A, TYPE 1, D01AUS, GRP 4 CONTROLLER		B		221364	JPB	JPB	01/12/09
SUITABLE FOR SERVICE EQUIPMENT - NORMAL SOURCE ONLY		A		220715	JPB	JPB	11/12/08
		-		219818	JPB	JPB	08/18/08
		-					ISSUE
DRAWN BY: JPB 08/15/08		CHECKED: JPB 08/15/08		APPROVED: JPB 08/15/08		FINAL APPROVAL: JPB 08/15/08	
MANUFACTURING TOLERANCES TO BE IN ACCORDANCE WITH ASCO PROCEDURE MP-1-003. FOR PLASTIC PARTS SEE MP-1-055		ASSEMBL. REF. NO.		COMPUTER GENERATED DRAWING		SCALE: 1/4" = 1" SIZE: DS	
PROPERTY OF ASCO POWER TECHNOLOGIES. USE PERMITTED FOR OUR WORK ONLY. ALL RIGHTS OF DESIGN OR INVENTION ARE RESERVED.		DWG. NO. 851743		REV. 221452		SHEET 10F1	
ASCO POWER TECHNOLOGIES, LP. FLORENCE PARK, NEW JERSEY 07932 U.S.A.							